



1-Flowerhill

WEDDINGS KIT



Sentosa's Latest Weddings Venue Surrounded by Lush Greenery

Nestled in the serene embrace of Sentosa's Imbiah Road, **1-Flowerhill** is a true hidden gem, eagerly awaiting its grand unveiling in Q1 2024.

Positioned at the heart of **Sentosa Sensoryscape**, the property is cocooned by a lush canopy of trees and tropical foliage, creating a captivating haven that perfectly reflects the tranquil beauty of its surroundings.

Echoing timeless ambiance and rich heritage within, be prepared to be impressed with an immersive happily ever after that transcends time and space.

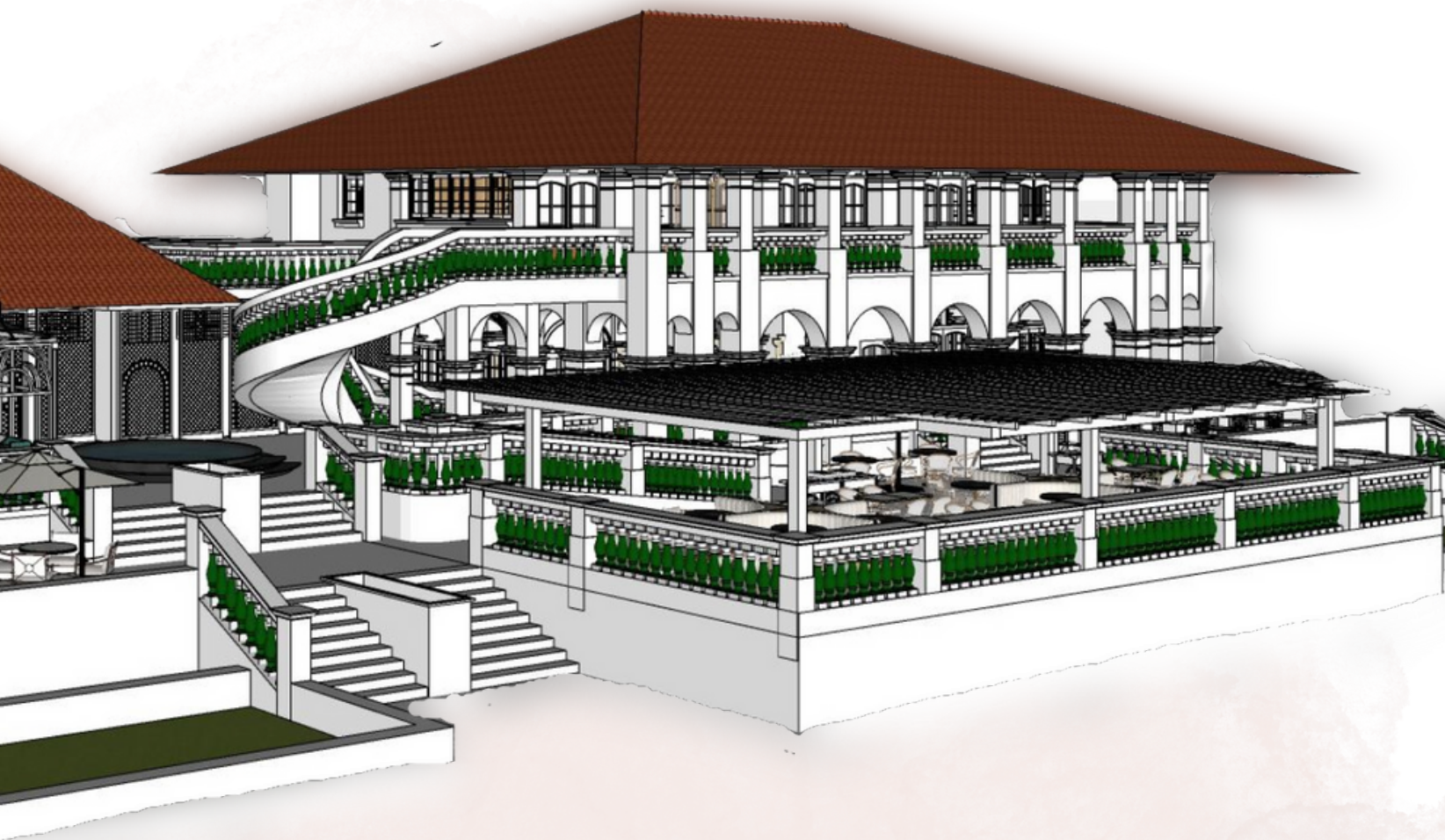



1-Flowerhill

Nestled in the serene embrace of Sentosa's Imbiah Road, **1-Flowerhill** is a true hidden gem, eagerly awaiting its grand unveiling in Q1 2024.

Positioned at the heart of **Sentosa Sensoryscape**, the property is cocooned by a lush canopy of trees and tropical foliage, creating a captivating haven that perfectly reflects the tranquil beauty of its surroundings.

As you step inside, a timeless ambiance embraces you, echoing the rich heritage held within its walls, while vibrant flowers and melodious birdsong add an extra layer of enchantment. This seamless fusion of history and nature offers an immersive experience that transcends time and space.



Getting Here

Transport Modes

- 1 Merlion Cablecar Station
- 2 Imbiah Monorail Station
- 3 Beach Monorail Station & Bus Depo

Public Carparks

- 4 Imbiah Carpark (50 lots)
- 5 Beach Carpark (620 lots)

Hotels & IR

- Oasia Resort Sentosa
- Resorts World Sentosa
- The Barracks Hotel Sentosa
- The Outpost Hotel
- Village Hotel Sentosa



Venue Offerings

- 01.** Wildseed Café
- 02.** Wildseed Bar & Grill
- 03.** Camille (Dining & Wine)
- 04.** Weddings & Solemnisations
- 05.** Corporate Functions & Events





Grand Terrace





Wildseed Café





Camille



Wildseed Café

The cafe's ambiance embodies elegant minimalism with clean lines and neutral colors, evoking a sense of openness and lightness, akin to a blank canvas awaiting transformation.

Floral elegance graces the decor, with tasteful flower arrangements adorning tables and walls, infusing the space with the changing seasons' natural beauty.

Versatile spaces cater to various needs, offering cozy corners for intimate conversations, communal tables for collaborative work or meetings, and open areas for gatherings and events.



Wildseed Bar & Grill

The Bar & Grill enchants with the vibrant beauty of blooming flowers and captivating live music.

This extraordinary space celebrates the harmonious union of scent and sound, offering visitors an immersive experience that indulges their senses and transports them to a realm where melody and floral enchantment intertwine.



Camille

Just as a flower gracefully transforms into a ripe fruit, the heritage building undergoes a remarkable metamorphosis to become an extraordinary restaurant.

Inspired by this natural progression, the interior design pays homage to the building's 100-year-old history, seamlessly blending old-world charm with contemporary elements.

Like the delicate petals of a flower, the layers of the building's history unfurl, unveiling architectural marvels, intricate details, and captivating narratives.



French-Japanese



Farm to Table



Sensory Experience





Weddings

- Grand Ceremonies
- Intimate Garden Weddings
- Sunset Solemnisation
- Water Pond Feature
- Intimate Receptions

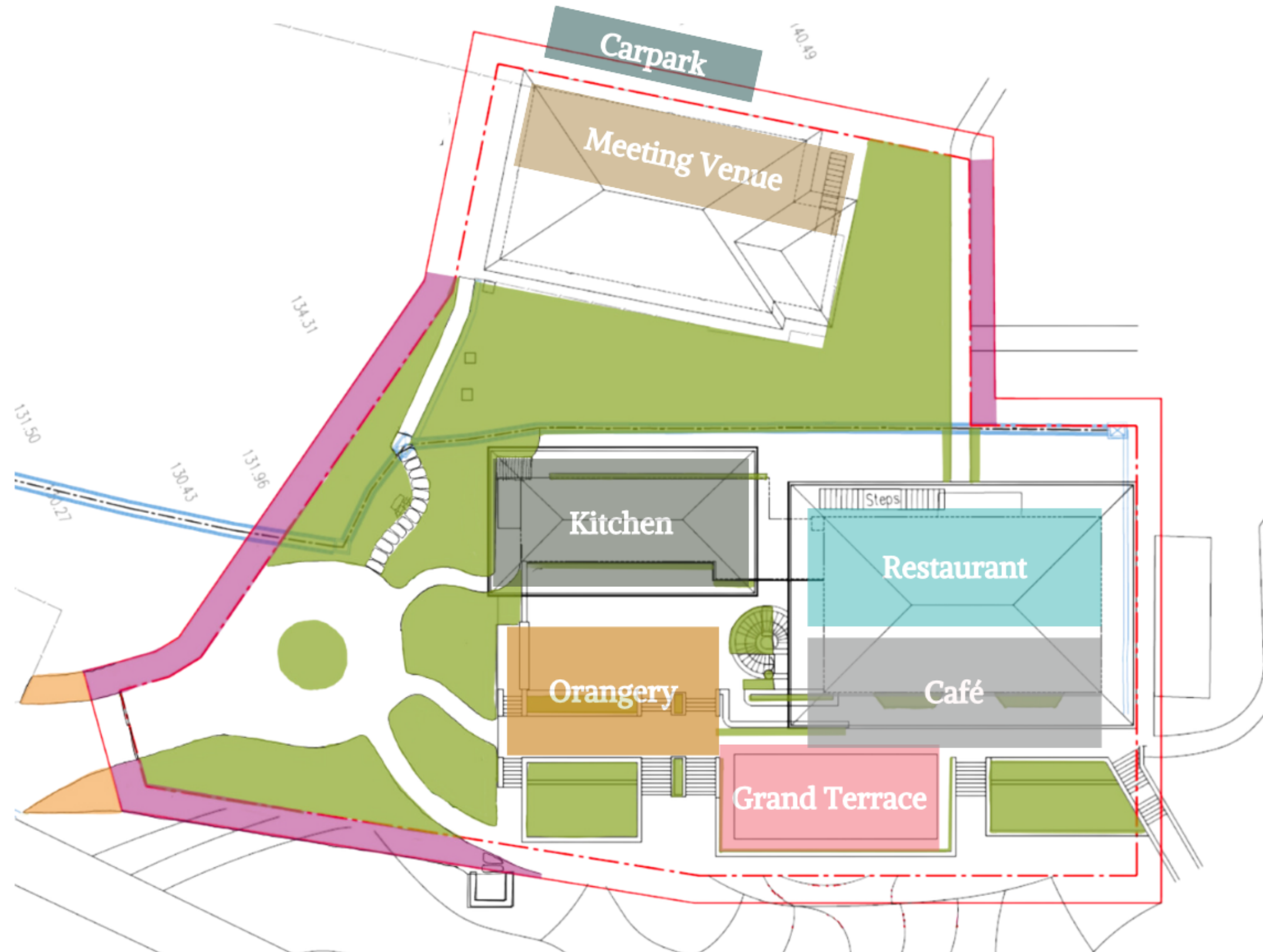


Corporate & Social Events

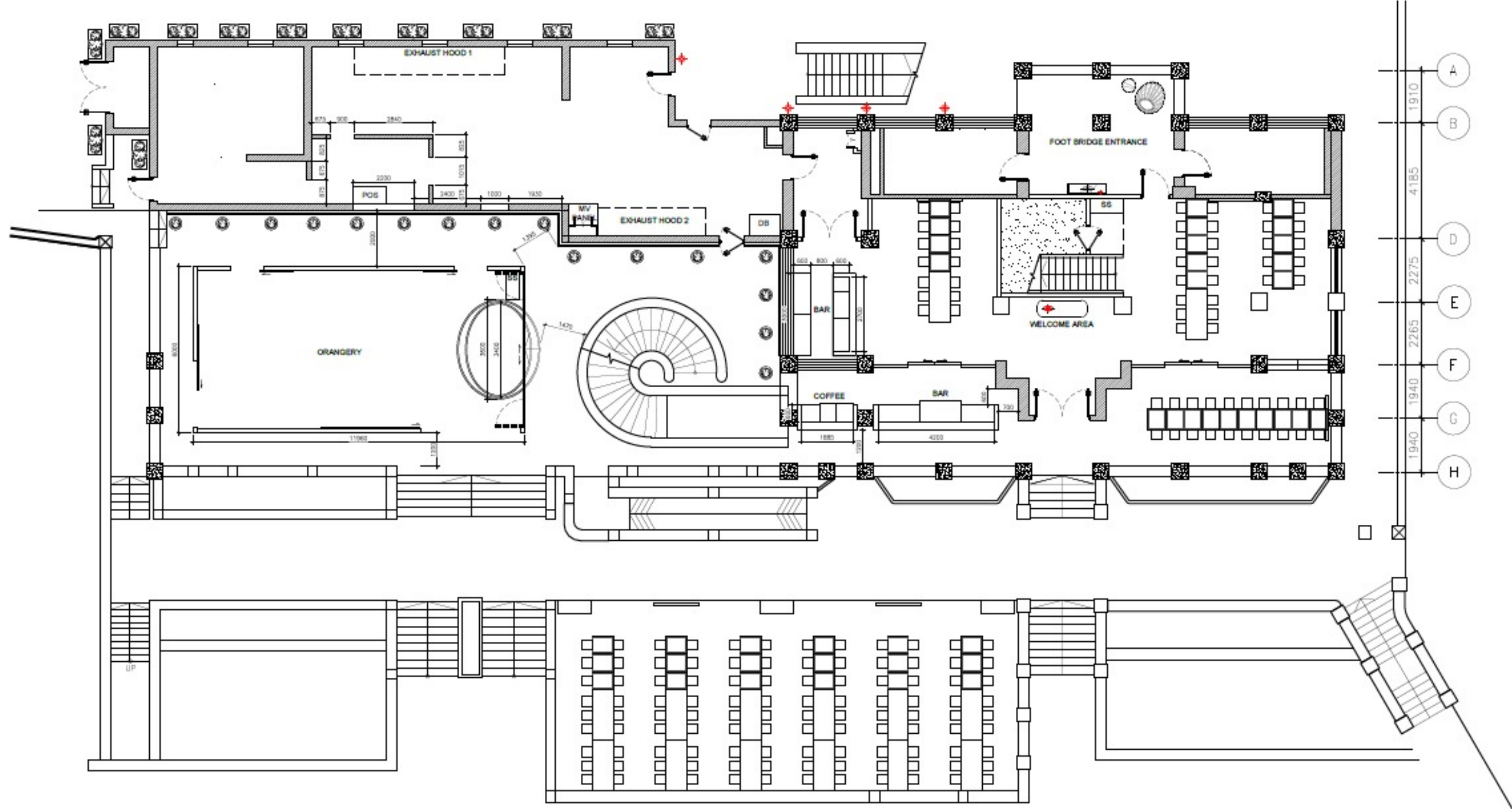
- Dinner & Dance
- Cocktail Receptions
- Product Launches
- Team Building Activities
- Networking Sessions
- Anniversary & Birthday Celebrations



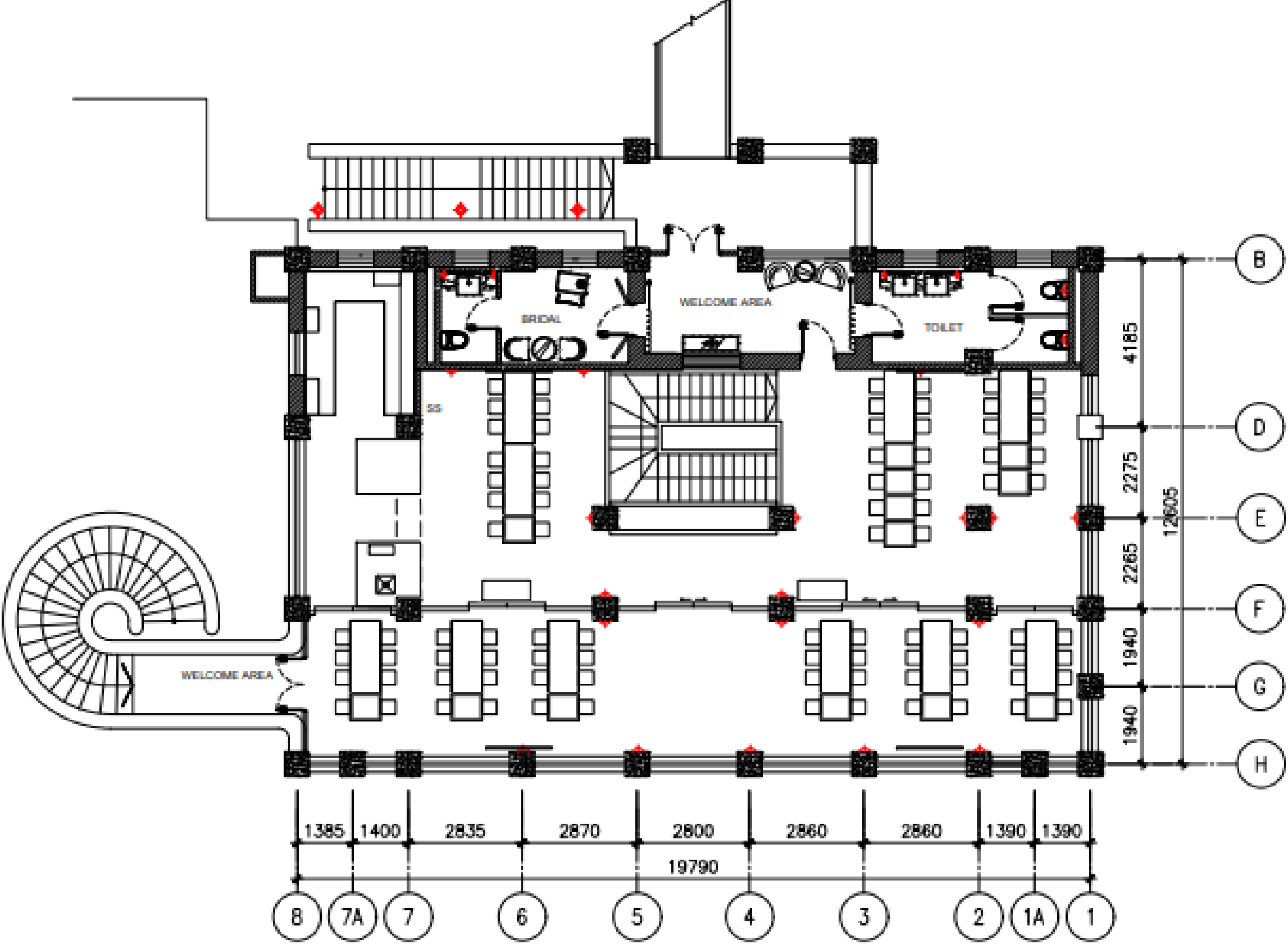
The Space



Floorplan - Level 1 (Wildseed Cafe / Bar & Grill)



Floorplan - Level 2 (Camille)





Fact Sheet

Facilities

Bridal Room | Projector & Screens | Sound & Light System | Full-Service Bar
Wireless Hand-held Microphone

Services

Event Planning & Management | Food & Beverage | Set up & Decoration

Wildseed Café / Bar & Grill (Level 1)

40 Seated (Indoor)
20 Seated (Verandah)

Camille Restaurant (Level 2)

86 Seated

Grand Terrace

80-108 Seated

Event Space

60 Seated (38 Imbiah)

Extended Services

Floral Decor | Wedding Favors | Invitation Cards | DJs | Live Bands | Emcees

A wedding reception scene set in a bright, white glass conservatory. The room is filled with rows of white, high-backed chairs arranged in a circular pattern. In the center, a white altar is decorated with large floral arrangements. A chandelier hangs from the ceiling, and the floor is covered with a patterned carpet. The conservatory has a white metal frame and large glass panels, allowing natural light to fill the space. The overall atmosphere is elegant and romantic.

Thank You